

DIGSpeak

OCTOBER 2011

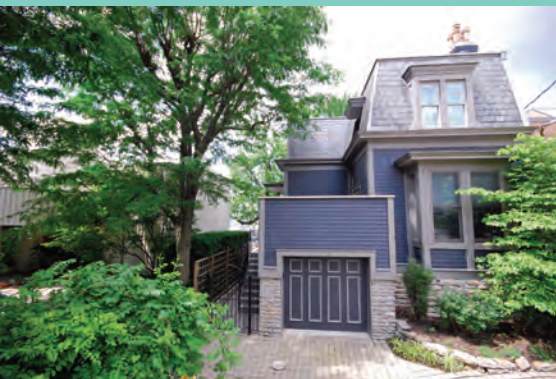
THE MONTHLY MISSIVE ABOUT REAL ESTATE + INTERIOR/EXTERIOR DESIGN + CONSTRUCTION/RENOVATION



PROPERTY OF THE MONTH

**909 Riverview Place
Mt Adams \$1,450,000**

One of the best city/river views on "The Hill" in the private enclave of Riverview Place. This historic townhome was meticulously reconstructed in 2005. A modern marvel featuring only the finest fits & finishes to suit today's lifestyles. Asking \$1,450,000



[Click here for more listings](#)



Lori Wellinghoff
President, DIGS



David Wellinghoff

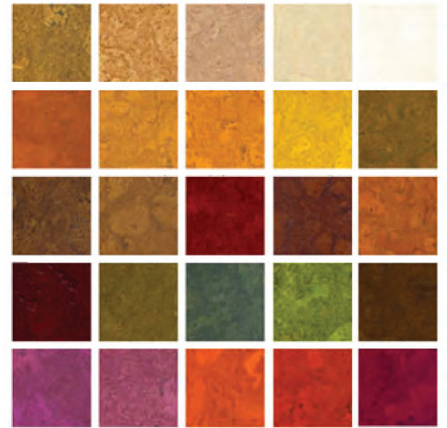
POP THE CORK

We've recently seen a resurgence of cork being used for flooring (and more) in interior design. Once a stalwart of the 60s, cork has made a much deserved comeback as a warm, durable and beautiful product for floors AND walls. There are endless colors and visual textures now available and it is easy to care for.

Cork is also an eco-sensitive sustainable and renewable product. The trees are not harmed in the harvesting of their bark for cork — most coming from the cork forests of arid areas of Spain and Portugal. Cork walls and floors are resilient and add an acoustically pleasing quality to rooms in which it is installed. Here are some tips about caring for your cork surfaces:

- Keeping it clean is a matter of vacuuming or damp mopping as necessary. As with hardwood, avoid excessive moisture.
- Yes, it is able to be refinished. Easily. Use water-based polyurethane varnish following a light scuff-sand with 220 grit sandpaper. Two coats should do it.
- Small pets are not an issue. Large dogs can cause damage, as they would on a hardwood floor.

[Click here to see some of our latest design projects](#)



Brian Gibson



John Harrison

THINKING ABOUT RENOVATION? USE THE WINTER TO PLAN



Tom Allison

At DIGS, we conduct projects in other parts of the country where some of which enjoy climates that allow us to work year round. But the majority of our construction/renovation work is in the greater Cincinnati area and that means a limited window of opportunity to have, say, the back of your house opened up for an addition. Our advice to clients is to use the winter months to plan, select, specify, review and cost-out your project and to initiate any requisite permitting. Getting all of this due-diligence done and out of the way will ensure proper scheduling for a successful spring start.



Annette Askam

Speaking of adding on... we always recommend consulting with a top-notch Realtor (a couple of our folks come to mind ;-)) to check out resale trends in your neighborhood. Is it really the best use of your money to do an addition? Will you price your house out of the market? Do you plan to live in your home for many years to come? Depending on market conditions in your neck of the woods and how long you plan to live in your home – it may be that the best bang for your buck is to sell and buy a home that already has the space you need.

[Click here to see construction/renovation projects we've done](#)

THINGS WE DIG

The American Heart Association "Tips, Trends & 'Tinis".

In September we hosted an event at DIGS as a lead up to the annual Heart Ball Gala, chaired this year by Christy Horan (David's sister) and her husband Terry. The 2012 Heart Ball on February 25 will honor "Hearts of the City" John and Eileen Barrett.

The DIGS event to benefit the AHA was attended by over 150 people who sipped "Tinis" and picked up Heart Health "Tips" all while being enlightened by our resident style gurus John Harrison and Brian Gibson who tended to the design "Trend" points and counter-points on what's in store for both traditionalists and modernists, alike.

Over \$2,500 was raised for the AHA and a good time was had by all.

[Click here for more information about the 2012 AHA Heart Ball](#)



NOT TO BE MISSED UPCOMING EVENTS

Tree Lighting in Hyde Park Square

Friday, November 18, 6:00 PM - Santa arrives for the kids & World Choir Games Chorus to perform.

www.hydeparksquare.org or www.facebook.com/hydeparksquare

*Services that require a real estate license are provided through

Comey & Shepherd
REALTORS

comey.com

TheWellinghoffGroup@comey.com



DIGS | REAL ESTATE | DESIGN | RENOVATION |

3524 Edwards Road/Hyde Park Square

513.533.3447

digs-home.com

info@digs-home.com



facebook.com/DIGSHOME